

UMSFACIAL™



UMSFACIAL™

To Make
the Best Skin
of Your Life

-37% LESS
WRINKLES
on average

MORE
LIFT **-23%**
on average

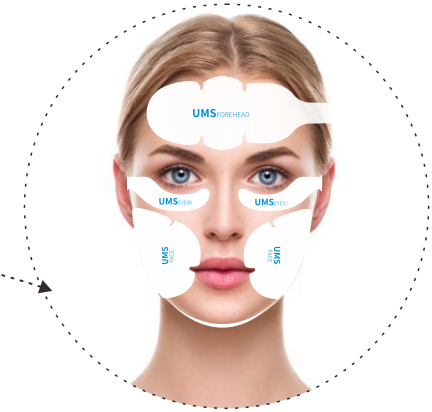
Tel: 0086 - 371 - 55677886 Fax: 0086 - 371 - 55677886 E-mail: info@pzlaser.com
For more information: www.pzlaser.com
Headquarters: Building 13, Electronic Industrial Park, Hi-tech Development Zone, Zhengzhou,
Henan, China

WWW.PZLASER.COM

PZLASER®

FIVE DIFFERENT SHAPES OF PATCHES

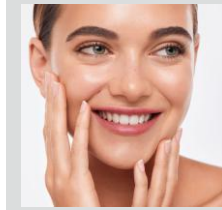
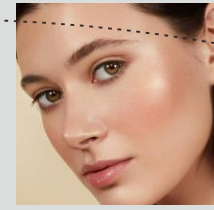
Five different shapes of patches special designed for treatment areas of forehead, eyes, cheeks, jawline and neck



FOREHEAD * 1

Forehead

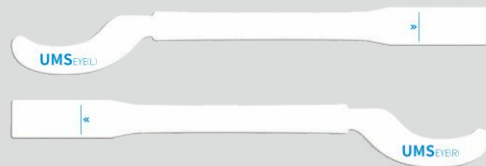
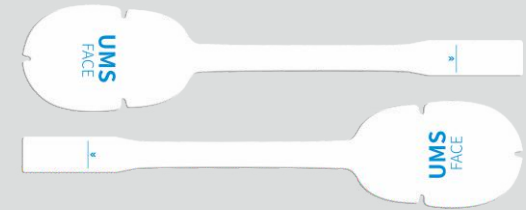
Feel free to smile again as your forehead wrinkles Vanish



FACE * 2

Cheeks

Out with the old. In with the young round plumpy cheeks.



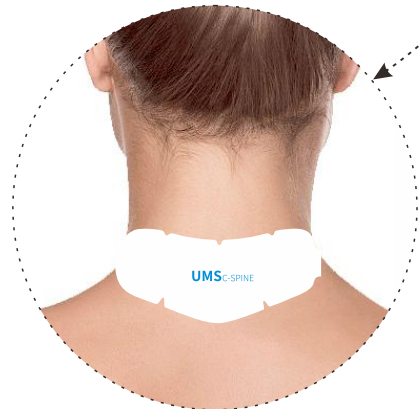
EYE * 2

Eyebrows

Open your eyes and experience the world's unimaginable beauty.



UMSFACIAL™



CHIN * 1

Jawline

A defined and contoured jawline will display your beauty and youth in a more subtle manner.



C-SPINE * 1

C-SPIN

Lift your radiant face with confidence, showcasing your perfect posture.

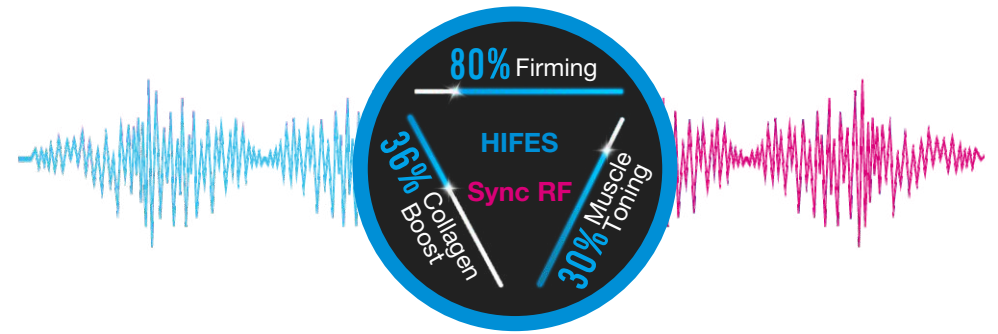


Less Wrinkles **More Lift**



Dual Action Optimal Results

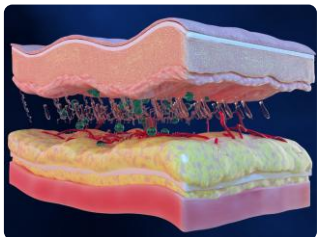
- ⦿ **HIFES* (High Intensity Focused Electrical Stimulation):** It emits thousands of pulses per session to contract and tone delicate facial muscles.
- ⦿ **Sync RF (Radiofrequency):** This technology remodels and smooths the skin by increasing collagen and elastin fibers.



How Does UMS FACIAL™ Work?

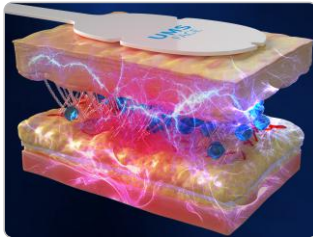
Emface is a facial rejuvenation procedure that uses high-intensity facial electromagnetic stimulation (HIFES) and radiofrequency (RF) energy to lift and sculpt facial contours while reducing wrinkles.

It is the only non-invasive facial treatment that targets both the skin and the underlying muscles, which help form the foundation of our face.



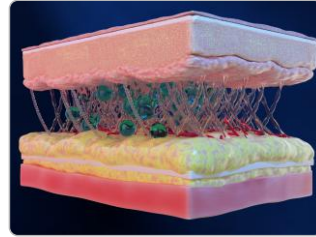
Before

The muscles and skin are in a relaxed state, with reduced volume and elasticity.



HIFES+Sync RF

The muscle density is increased, with new collagen and elastin growth.



After

Wrinkles and sagging are reduced, with more youthful and refreshed look.

HIFES* (High Intensity Focused Electrical Stimulation)

- **Targeted Muscle Activation:** HIFES specifically contracts facial muscles.
- **Electromagnetic Stimulation:** HIFES effectively stimulates muscle fibers.
- **Facial Lifting:** HIFES aims to lift and tone facial muscles.

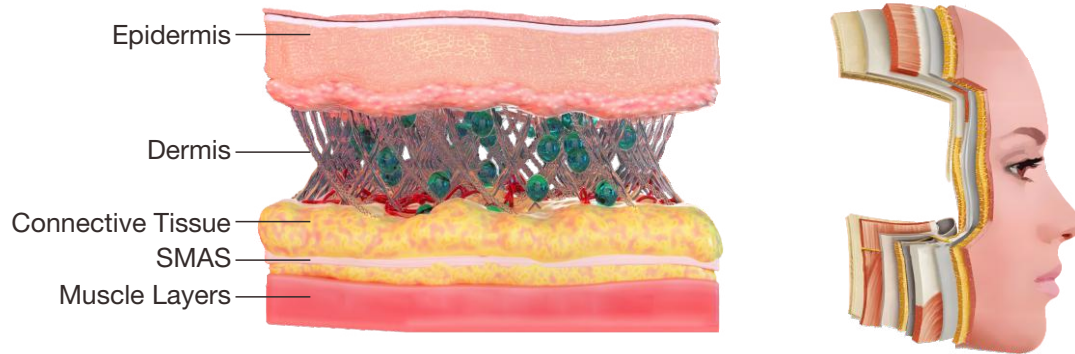
Sync RF (Radiofrequency)

- **Skin Remodeling:** It heats the dermis, stimulating collagen production.
- **Tightening Effect:** It tightens the skin, enhancing overall skin quality.
- **Collaboration:** It works on skin quality, resulting in a comprehensive approach.

ALL-IN-ONE REJUVENATION

UMSFACIAL™

In just 20 minutes, this needle-free wonder works its magic, addressing not only the epidermis and dermis but also diving deeper into the realms of connective tissue, fascia, and muscle layers.



Key Benefits

▶ 2 THERAPIES IN ONE PROCEDURE

Combination of synchronized RF and HIFES energies for simultaneous treatment of facial skin and muscles.

▶ FIRMING

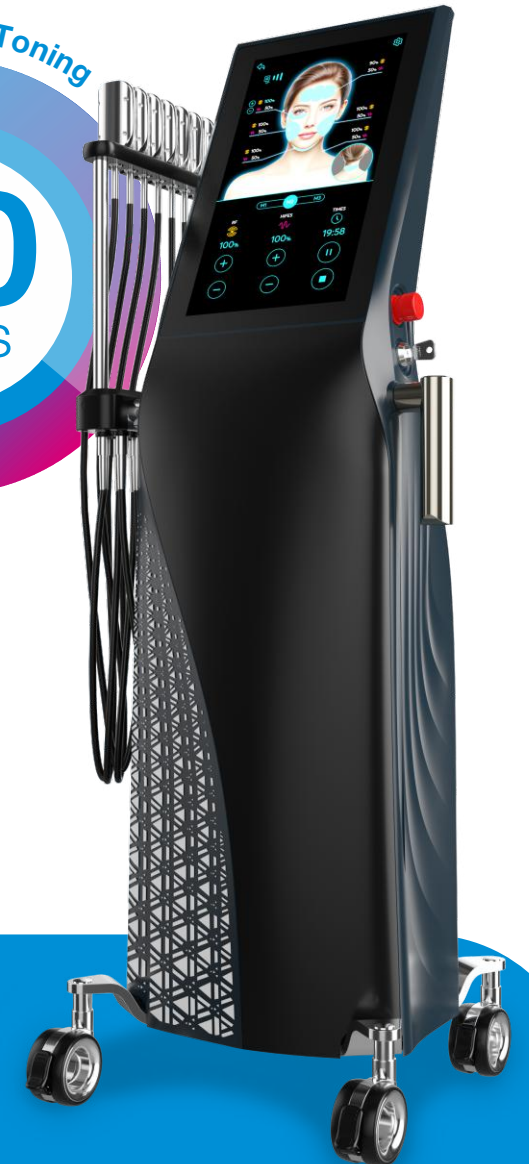
Firms the framework of face.

▶ COLLAGEN BOOST

Enhances skin texture and elasticity.

▶ MUSCLE TONING

Defines jawline and contours.



No Injections



No Surgery



RF energy directly reaches the muscle base



HIFES Face Lifting



Activated collagen Full skin

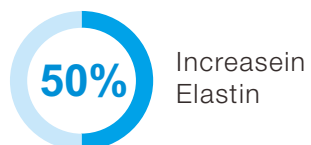
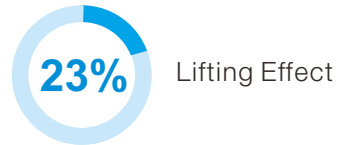


Smoothing fine lines Return to youth



UMSFACIAL™

BY THE NUMBERS



Before and After

The amazing results are both instant and long-lasting.



before

after



before

after



before

after



before

after



before

after



before

after